

#### DESCRIPTION

**VALMATIC™** Double Window Sight Glass is generally used to check the operation of the steam trap to detect the steam leakage. It is also used for checking the liquid flow in open and closed system. The sight glass can be built-in with a flap, the position of the flap gives a certain indication of the velocity of the fluids.

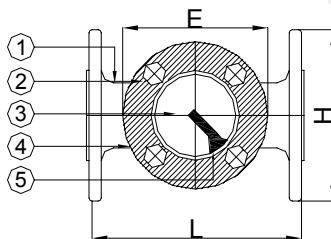
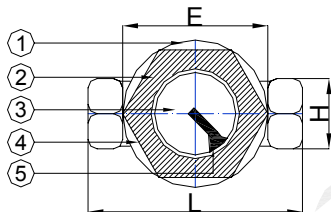
**VALMATIC™** Double Window Sight Glass can be installed in horizontal and vertical positions with the inlet under the flap. These sight glasses can be applied extremely well in totally filled pipes for hot and cooling water, lubricating oil system and condensate returned line. It is widely used in process industries such as Palm Oil and Refinery Plant, Food Industries, Petrochemical Plant, Heating and Cooling System.

#### APPLICATION

Suitable for water, steam, oil, condensate and others non-aggressive media (Refer to corrosion resistance table for valve materials selection).

#### SPECIFICATION

End Connection	- Screwed End BSPT Female Thread and Flanged End to DIN, ANSI or JIS
Pressure Rating	- 7 Bar maximum
Working Temperature	- Up to 220°C



#### MATERIALS

No.	Parts	Material
1.	Body	Cast Iron A 126B, Cast Steel WCB, Stainless Steel AISI 304, AISI 316
2.	Cap	Cast Iron A 126B, Cast Steel WCB, Stainless Steel AISI 304, AISI 316
3.	Glass	Boro- Silicate
4.	Gasket	Non-asbestos
5.	Flap	Chrome Plate Steel

#### DIMENSIONS (mm)

Size	inch - mm -	1/2	3/4	1	1¼	1½	2	2½	3	4	5	6	8
		15	20	25	32	40	50	65	80	100	125	150	200
Flanged End	L	130	130	166	166	180	270	270	270	320	380	420	500
	H	100	100	100	125	125	125	167	180	210	270	280	345
	E	40	40	40	50	50	50	85	85	110	130	160	160
	Weight(Kg)	3.4	3.5	4.5	5.7	6.5	8.5	11	16	20	35	54	65
Screwed End	L	75	90	90	120	120	140	-	-	-	-	-	-
	H	28	66	74	94	98	110	-	-	-	-	-	-
	E	22	30	30	42	42	53	-	-	-	-	-	-
	Weight (Kg)	1.5	1.6	1.8	2	3.2	3.5	-	-	-	-	-	-

The specification is subject to change without further notice



## VALMATIC ENGINEERING SDN BHD

35, Jalan Layang Layang 4, Puchong Jaya Industrial Park,  
Bandar Puchong Jaya, 47100 Puchong,  
Selangor, Malaysia

(369320 W)

Tel : 603-5882 6683  
Fax : 603-5882 8366  
Email : [vmatic@pd.jaring.my](mailto:vmatic@pd.jaring.my)  
http : [www.valmatic.com.my](http://www.valmatic.com.my)