



## DESCRIPTION

**VALMATIC™** Stainless steel Disco Check valve is designed to prevent the pipelines and related equipments against reverse flow of medium. This check valve provides high degree of tightness and reliability.

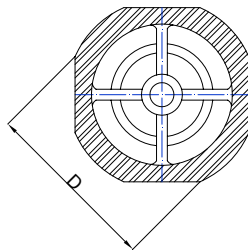
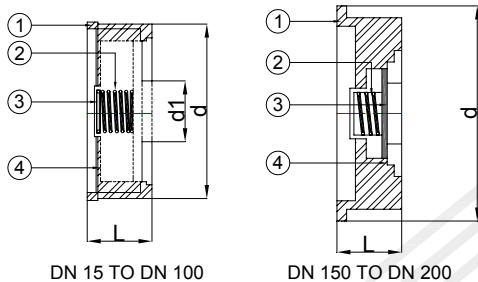
**VALMATIC™** Stainless Steel Disco Check Valve is designed with compact construction, environment-friendly and is maintenance free. The disco check valve can be installed in horizontal or vertical positions in the piping systems. This Valve is widely used in process industries such as Palm Oil and Refinery Plant, Food Industries, Petrochemical, Heating and Cooling System.

## APPLICATION

Suitable for water, steam, gases, oil and others non-aggressive media (Refer to corrosion resistance table for valve materials selection).

## SPECIFICATION

Face to Face Dimension	- DIN 3202 Part 3- K4
End Connection	- Wafer Type to suit DIN, BS and ANSI Flanges
Pressure Rating	- DN 15 to DN 100, 40 Bar maximum DN 125 to DN 200, 25 Bar maximum
Working Temperature	- Up to 230° C



## MATERIALS

No.	Parts	Material
1.	Body	Stainless Steel 1.4408 (AISI 316)
2.	Spring	Stainless Steel 1.4301 (AISI 304)
3.	Disc	Stainless Steel 1.4408 (AISI 316)
4.	Cap	Stainless Steel 1.4408 (AISI 316)

## OPENING DIFFERENTIAL PRESSURE IN mBAR

Size (DN)	15	20	25	32	40	50	65	80	100	125	150	200
↔	23	23	23	24	25	25	25	26	27	30	30	30
↑	25	25	25	27	29	29	31	32	33	36	35	34
↓	21	21	21	21	21	21	21	21	21	Upon Request		

↔↑↓ = Indicates flow direction

## DIMENSIONS (mm)

Size	inch -	1/2	3/4	1	1¼	1½	2	2½	3	4	5	6	8
	mm -	15	20	25	32	40	50	65	80	100	125	150	200
L		16	19	22	28	32	40	46	50	60	90	106	140
d1		15	20	25	32	40	50	63	77	96	125	150	200
d		43	53	63	75	86	95	115	131	151	190	218	273
D		53	63	73	84	94	107	126	144	164	-	-	-
Weight (Kg)		0.12	0.18	0.29	0.47	0.7	1	1.74	2.21	3.8	10	13	24

The specification is subject to change without further notice



## VALMATIC ENGINEERING SDN BHD

35, Jalan Layang Layang 4, Puchong Jaya Industrial Park,  
Bandar Puchong Jaya, 47100 Puchong,  
Selangor, Malaysia

(369320 W)

Tel : 603-5882 6683  
Fax : 603-5882 8366  
Email : [vmatic@pd.jaring.my](mailto:vmatic@pd.jaring.my)  
http : [www.valmatic.com.my](http://www.valmatic.com.my)