

## Double Door Check Valve

**FIG. F0411-175**  
**FIG. F0411**

### Specifications

- Meet or exceed the requirements of UL312 and API 584 standard.
- Spring loaded for fast closure.
- Vertical or Horizontal installation.
- Resilient-seated for perfect tightness even at low differential pressure.
- Excellent flow characteristics and low pressure losses at high flow rates.
- Connection ends comply with ASME B16.1 Class 125 and ASME B16.5 Class 150 Flanges.

- UL 312/ULC listed.
- F0411-175 valves are Gost certified.

### Working Pressure and Temperature

- F0411-175: 175 psi @ 0°C to 87°C
- F0411: 300 psi @ 0°C to 87°C

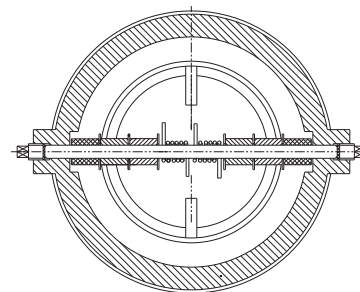
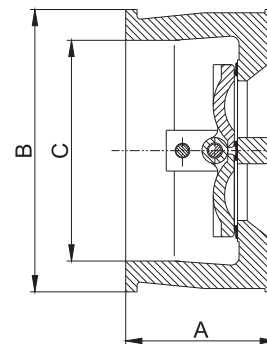
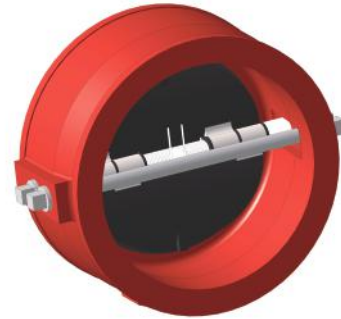
### Corrosion Protection

- Fusion bonded coating interior and exterior meet or exceed all applicable of AWWA C550 standard.

### Material Specifications

Part	Material	ASTM Specification	
Body	F0411-175	Cast Iron	A126 Class B
	F0411	Ductile Iron	A536 Grade 65-45-12
Body Seat Ring	Rubber	D2000 EPDM/NBR	
Disc	Stainless Steel	A351 Grade CF8/CF8M	
Hinge Pin	Stainless Steel	A276 Type 416	
Spring	Stainless Steel	A276 Type 304	
Stop Pin	Stainless Steel	A276 Type 416	
Pin Retainer	Carbon Steel	A105	

### Schematic



### Main Dimensions (mm/inch)

Size	4	6	8	10	12
A	93/3.66	105/4.13	121/4.75	154/6.00	187/7.36
B	172/6.75	220/8.66	280/11.00	340/13.40	410/16.14
C	136/5.35	178/7.00	230/9.00	285/11.25	338/13.31

#### Notes

• Designs, materials and specifications shown are subject to change without notice due to the continuous development of our products.