



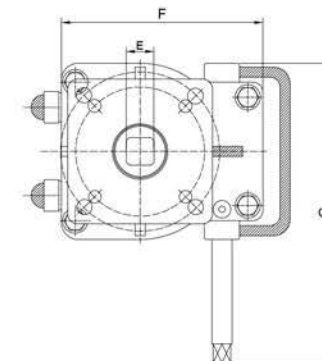
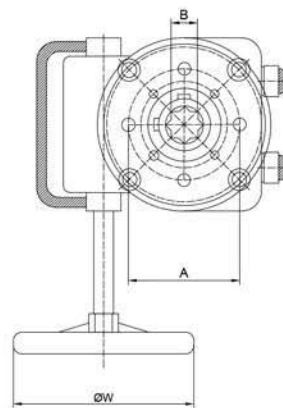
## OPERATION

To engage manual operation, first pull out the lock handle and then rotate the clutch lever in anti-clockwise direction until engagement takes place. To return to automatic mode, first pull out the lock handle and then rotate the clutch lever in clockwise direction until engagement take place.

## SPECIFICATION

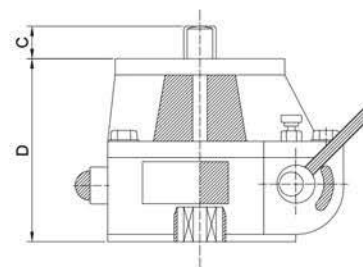
Housing	Aluminium Alloy
Worm Gear	Spheroidal Graphite Cast Iron
Transmission Rod	Alloy Steel
Working Temperature	Up to 120°C
Stroke Adjustment	+/- 5° at each end
Movement	0° to 90°
Finish Paint	Two Polyurethane Coated
Enclosure	IP65
Torque Range	Up to 3800 Nm
Connection	ISO 5211 Standard

## WORM GEAR DE-CLUTCHABLE



## TECHNICAL DATA

MODEL	GEAR RATIO	OUTPUT TORQUE	WEIGHT (Kg)
SD 1	26 : 1	180 Nm	3
SD 2	28 : 1	320 Nm	4.5
SD 3	38 : 1	680 Nm	7
SD 4	54 : 1	1200 Nm	13.7
SD 5	80 : 1	2100 Nm	22



**FIG SD**

## DIMENSIONS (mm)

MODEL	A	B	C	D	E	F	G	ØW	VALVE CONNECTION ISO 5211	ACTUATOR CONNECTION ISO 5211
SD 1	57	14*14	15	105	14*14	115	180	180	F05/F07	F05/F07
SD 2	70	17*17	19	110	17*17	135	220	200	F07/F10	F07/F10
SD 3	89	22*22	22	130	22*22	160	257	280	F07/F10/F12	F10/F12
SD 4	108	27*27	28	165	27*27	200	330	320	F10/F12/F14	F10/F12/F14
SD 5	108	36*36	38	185	36*36	244	370	400	F14/F16	F14/F16

\*The specifications are subject to change without further notice