



FUNCTION

The steam separator is installed 90 degrees to a horizontal pipeline. This design utilizes an angled deflector plate to create the centrifugal vortex, throwing the heavier, suspended water to the wall and drips downwards by gravity.

The lower portion of the vessel has a containment plate preventing re-entrainment of the separated liquid and drains to a steam trap installed below.

SPECIFICATION

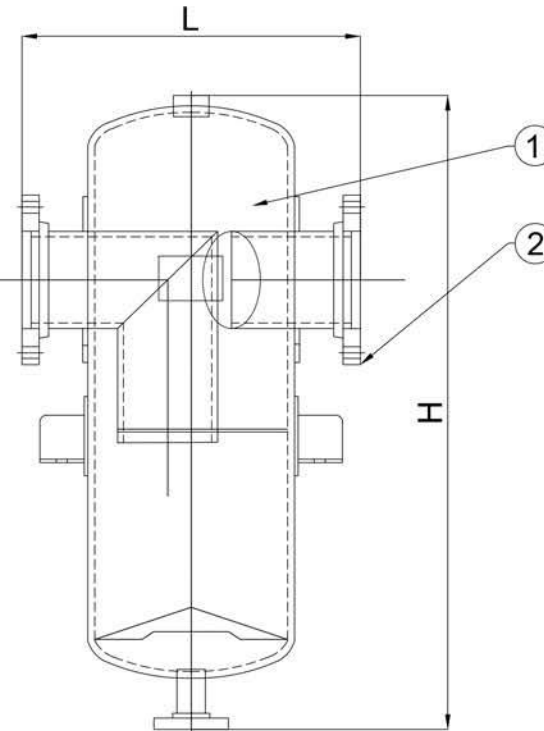
Design & Manufactured	ASME Section VIII Division 1
Test Pressure	Up to 54 bar
Design Temperature	Up to 400°C
End Connection	Flanged End to ANSI 300,600

MATERIAL

PARTS	FIG SP
1. Body	Boiler Plate SA.516 Gr.70
2. Flanges & Cover	SA/A105

DIMENSIONS (mm)

Size	inch	6	8	10
Class 300	L	457	457	530
	H	1015	1015	1015
	Thickness	15	15	15
Class 600	L	-	700	700
	H	-	1500	1500
	Thickness	-	25.4	25.4



CAPACITY (T/hr)

Size	6	8	10
Class 300	29	51	80
Class 600	-	63	99

STEAM SEPARATOR

CARBON STEEL



FIG SP

*The specifications are subject to change without further notice