



## APPLICATION

Suitable for water, sludge, oil and non-abrasive media  
(Refer to corrosion resistance table for valve materials selection).

# CHECK VALVE SUPERLITE SINGLE PLATE

## STAINLESS STEEL / FORGED STEEL

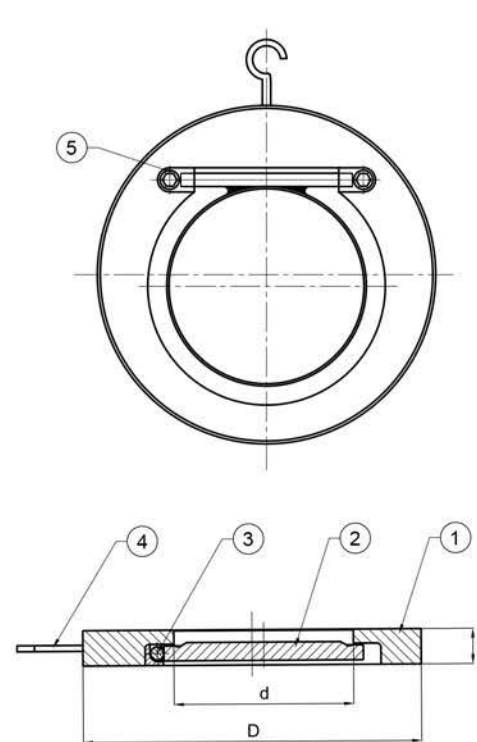
## SPECIFICATION

Design and Manufactured	API 6D
Pressure Rating	ANSI 150
Flange End Dimension	ASME B16.5, B16.47A
Test and Inspection	According to API 598
Pressure - Temperature Rating	ASME B16.34

## MATERIALS

PARTS	FIG. 4SP6	FIG. 4SP7	FIG. 4SP5
1. Body	ASTM A182 F304	ASTM A182 F316	ASTM A105+STL
2. Disc	ASTM A182 F304	ASTM A182 F316	ASTM A182 F316
3. Hinge Pin	SS304	SS316	SS316
4. Flying Rings	Stainless steel	Stainless steel	Stainless steel
5. Bolt	SS304	SS316	SS316

\*Others material are available upon request.



**FIG 4SP**

## DIMENSIONS (mm)

Size	inch	2	2 ½	3	4	5	6	8	10	12	14	16	18	20	24
	mm	50	65	80	100	125	150	200	250	300	350	400	450	500	600
L		19	19	19	19	19	19	29	29	38	44	51	60	64	70
D		104	123	136	174	196	221	278	339	409	449	512	548	605	716
d		30	40	52	71	93	114	157	195	230	270	310	360	406	490

\*The specifications are subject to change without further notice