



## SPECIFICATION

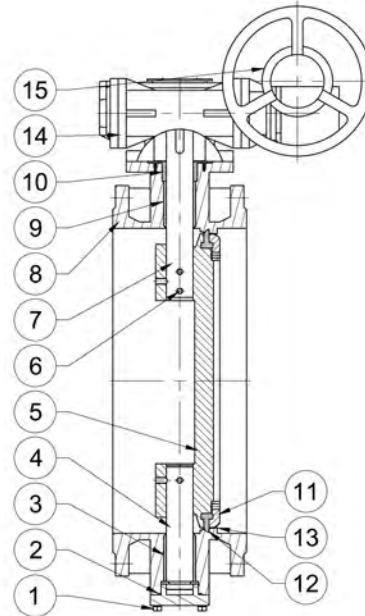
Valve Size	DN100 to DN3000
Standard Compliance	BS EN 593 : 2004
Face to Face	BS EN 558-1, Series 13 & 14
Flange Standard	BS EN 1092-2 PN10 or PN16
Pressure Rating	10 or 16 Bar
Service Temperature	Up to 80° C
Top Flange Dimentions	ISO 5211
Test Pressure (Hydrostatic)	Body : 1.5 x max. working pressure Seat : 1.1 x max. working pressure
Actuation	Worm Gear Actuator
Optional	Pneumatic or Electric Actuated

# BUTTERFLY VALVE DOUBLE FLANGED

## DUCTILE IRON

## MATERIALS

PARTS	FIG. 3DF
1. Bolt	Stainless Steel BS 970 Part 1 SS 304
2. Bushing Cover	Ductile Iron EN-GJS-500-7
3. Bottom Bushing	Bronze BS 1400 LG2
4. Bottom Shaft	Stainless Steel BS 970 Part 1 431S29
5. Disc	Ductile Iron EN-GJS-500-7
6. Disc Pin	Stainless Steel BS 970 Part 1 SS 304
7. Upper Shaft	Stainless Steel BS 970 Part 1 431S29
8. Body	Ductile Iron EN-GJS-500-7
9. Upper Bushing	Bronze BS 1400 LG2
10. Packing	EPDM BS EN 681
11. Retaining Ring	Stainless Steel BS 970 Part 1 SS 304
12. Sealing Ring	EPDM BS EN 681-1 Type WA
13. Body Seat	Stainless Steel BS 970 Part 1 SS 304
14. Gear Housing	Ductile Iron EN-GJS-500-7
15. Handwheel	Ductile Iron EN-GJS-500-7



**FIG 3DF**

## FLOW COEFFICIENTS (Cv VALUE)

Opening Angle	Size (mm)												
	200	250	300	350	400	450	500	600	700	800	900	1000	1200
10°	93	145	208	283	370	468	578	883	1133	1480	1873	2313	3331
20°	186	290	418	569	742	940	1161	1672	2275	2972	3761	4643	6683
30°	280	438	630	858	1121	1418	1751	2522	3432	4483	5674	7005	10087
40°	437	682	983	1338	1747	2211	2730	3931	5351	6989	8845	10920	15725
50°	713	1114	1604	2183	2852	3609	4456	6416	8733	11406	11436	17822	25664
60°	1155	1805	2599	3523	4620	5840	7219	10395	14094	18408	23389	28763	41419
70°	1863	2911	4192	5705	7452	9431	11644	16767	22821	29807	37725	46574	67067
80°	2862	4472	6319	8764	11447	14488	17886	25756	35057	45788	57961	71544	103024
90°	3426	5353	7708	10491	13703	17343	21411	30831	41965	54812	69371	85644	123327

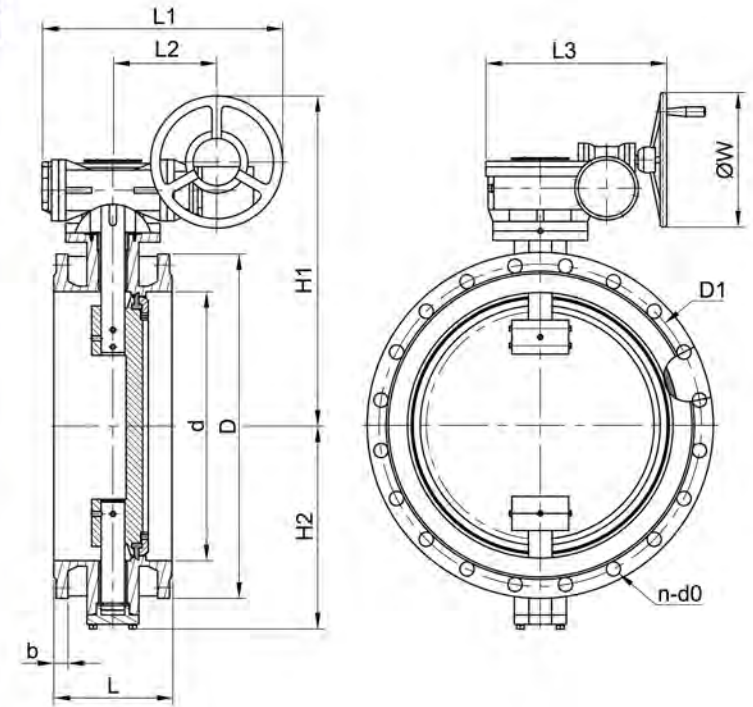
\*The v Value is the water flow rate in USGPM at 68°F which passing through the valve cause a pressuredrop of 1 PSI.



## BUTTERFLY VALVE DOUBLE FLANGED ECCENTRIC DUCTILE IRON

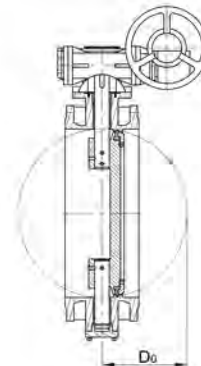
### DIMENSIONS (mm)

SIZE (mm)	L	H1	H2	L1	L2	L3	ØW	PN 10					PN 16				
								D	d	b	D1	n-do	D	d	b	D1	n-do
100	127	228	135	97	45	210	125	220	158	19	180	8-19	220	158	19	180	8-19
150	140	285	170	97	45	210	160	285	212	19	240	8-23	285	212	19	240	8-23
200	152	335	200	140	63	315	200	340	268	20	295	8-23	340	268	20	295	12-23
250	165	435	230	167	72	242	300	400	320	22	350	12-23	405	320	22	355	12-28
300	178	520	265	201	91	275	400	455	370	24.5	400	12-23	460	370	24.5	410	12-28
350	190	575	295	201	91	275	400	505	430	24.5	460	16-23	520	430	26.5	470	16-28
400	216	665	315	473	147	420	500	565	482	24.5	515	16-28	580	482	28	525	16-31
450	222	700	345	473	147	420	500	615	532	25.5	565	20-28	640	550	30	585	20-31
500	229	740	385	533	179	476	500	670	585	26.5	620	20-28	715	610	31.5	650	20-34
600	267	800	450	533	179	476	500	780	685	30	725	20-31	840	720	36	770	20-37
700	292	840	490	655	217	577	500	895	794	32.5	840	24-31	910	795	39.5	840	24-37
800	318	905	550	655	217	577	500	1015	900	35	950	24-34	1025	900	43	950	24-41
900	330	970	600	748	262	664	500	1115	1000	37.5	1050	28-34	1125	1000	46.5	1050	28-41
1000	410	1100	670	748	262	664	600	1230	1113	40	1160	28-37	1255	1112	50	1170	28-44
1100	470	1150	760	884	334	790	600	1340	1215	42.5	1270	32-37	1355	1215	53.5	1270	32-44
1200	470	1260	780	884	334	790	600	1455	1328	45	1380	32-41	1485	1328	57	1390	32-50
1400	530	1450	880	1110	558	1140	700	1675	1530	46	1590	36-44	1685	1530	60	1590	36-50
1600	600	1565	1010	1195	572	1200	700	1915	1750	49	1820	40-50	1930	1750	65	1820	40-57
1800	670	1725	1170	1275	612	1250	700	2115	1950	52	2020	44-50	2130	1950	70	2020	44-47
2000	760	1684	1301	1650	1015	1135	700	2325	2150	55	2230	48-50	2345	2150	75	2230	48-62



### SKETCH OF STRUCTURE OF CHORD SPACING FLANGED BUTTERFLY VALVE

Connection dimension of flanged valve are shown in below drawing.  
For pipelines D0 of disc extending long end face of short body flanged  
butterfly valve to prevent from the interference in installation.



DN	D0	DN	D0
200	Ø159.9	800	Ø737.8
250	Ø200.8	900	Ø840.8
300	Ø258.7	1000	Ø920.6
350	Ø306.6	1200	Ø1107
400	Ø353.3	1400	Ø1328
450	Ø412.0	1600	Ø1517
500	Ø452.2	1800	Ø1711
600	Ø548.7	2000	Ø1911
700	Ø636.6		