



## APPLICATION

Suitable for water, steam, oil, condensate and non-abrasive media  
(Refer to corrosion resistance table for valve materials selection).

## SPECIFICATION

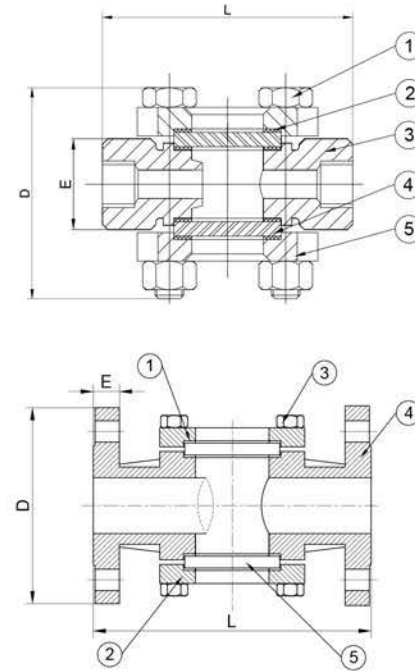
End Connection	Screwed End BSPT Female Thread and Flanged End to DIN, ANSI or JIS
Pressure Rating	7 Bar Maximum
Working Temperature	Up to 300°C

# SIGHT GLASS DOUBLE WINDOW

## CAST IRON / CARBON STEEL / STAINLESS STEEL

## MATERIALS

PARTS	FIG. 121	FIG. 122	FIG. 126	FIG. 127
1. Body	WCB	Carbon Steel	SS304	CF8M
2. Valve Cover	WCB	Carbon Steel	SS304	CF8M
3. Bolt / Nut	B7 2H	B8 8	B8 8	B8M 8M
4. Sealing Gasket	304+Graphite	304+Graphite	304+Graphite	304+Graphite
5. Glass	Borosilicate	Borosilicate	Borosilicate	Borosilicate



## DIMENSIONS (mm)

Size	inch mm	1/2	3/4	1	1½	2	2½	3	4	6
		15	20	25	40	50	65	80	100	150
Flanged End ANSI 150	L	-	150	160	200	230	290	310	350	450
	D	-	11.2	12.7	15.9	17.5	20.7	22.3	22.3	23.9
	E	-	100	110	125	150	180	190	230	280
Flanged End PN 16	L	-	-	-	-	230	290	310	-	-
	D	-	-	-	-	18	18	20	-	-
	E	-	-	-	-	165	185	200	-	-
Screwed End	L	96	101	122	147	160	-	-	-	-
	D	28	35	46	60	72	-	-	-	-
	E	81	95	95	115	135	-	-	-	-

\*The specifications are subject to change without further notice

## FIG 12