



APPLICATION

Suitable for oil, cold and hot water, non-abrasive media
(Refer to corrosion resistance table for valve materials selection).

SPECIFICATION

Standard	Conform to BS 1212 Standard
End Connection	Screwed End or Flanged End
Working Pressure	10 Bar
Working Temperature	Up to 120°C

MATERIALS

PARTS	FIG. 16S	FIG. 16A1/FIG. 16A6/FIG. 16A7
1.Body	A351 CF8	Cast Iron/SS 304/SS 316
2.Seat	Viton	SS 304/SS 304/SS 316
3.Disc	A351 CF8	SS 304
4.Lever	A351 CF8	SS 304
5.Float Ball	SS 304	SS 304
6.Bar/Yoke	SS 304	Cast Iron/Cast Iron/SS3 04
7.Gasket	Silicone Rubber	Graphite
8.Gland	-	Bronze/Bronze/SS 304
9.Packing	-	Teflon
10.Piston	-	SS 304
11.Seat Packing	-	NBR

DIMENSIONS (mm)

	Size	(inch) mm	1/2	3/4	1	1¼	1½	2	2½	3	4	5	6	8
			15	20	25	32	40	50	65	80	100	125	150	200
Screwed End	L		480	590	635	640	785	950	-	-	-	-	-	-
	A		32	42	45	52	60	70	-	-	-	-	-	-
	B		80	80	95	95	120	140	-	-	-	-	-	-
Flanged End	L1		-	-	-	-	-	215	230	250	280	308	380	440
	H		-	-	-	-	-	295	315	317	340	340	370	390
	D		-	-	-	-	-	200	250	250	250	250	250	250

*The specifications are subject to change without further notice

BALL FLOAT VALVE STAINLESS STEEL

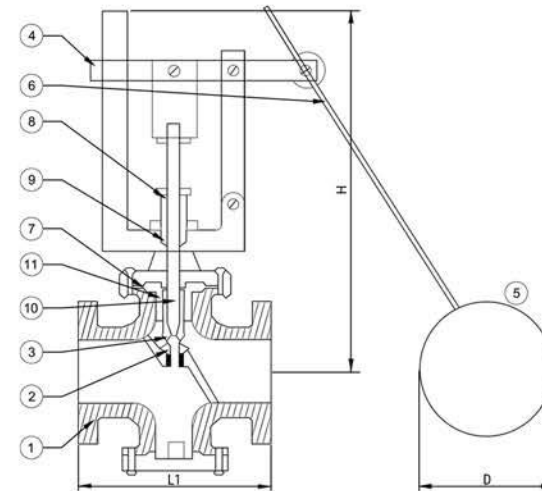
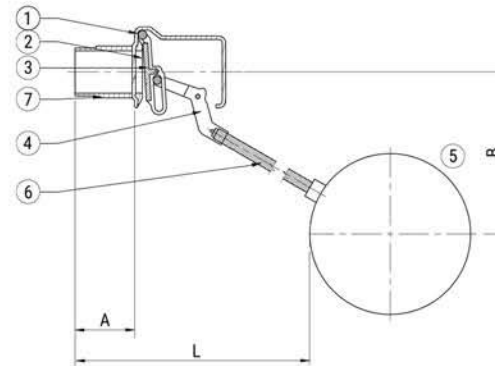


FIG 16S



FIG 16A