



APPLICATION

Suitable for water and others non-abrasive fluids.

SPECIFICATION

Dial Size	300mm, 400mm, 600mm and 900mm
Indication Unit	Meters or feet
Accuracy	1.6% of Full Scale
Zero Stability	+/- 1% of Full Scale
Working Temperature	Up to 80°C
Relative Humidity	90% RH
Optional	Back Cover and Indicator Dial with Luminous Marking
Level Range	0 to 10 feet, 0 to 12 feet, 0 to 20 feet, 0 to 3 meters, 0 to 6 meters, 0 to 10 meters. Others range are available upon request.

MATERIALS

PARTS	FIG. 7L1
1. Casing	Mild Steel with Polyester Coating
2. Gear	Plastic and Bronze
3. Pulley	Aluminum
4. String	Nylon or Stainless Steel
5. Counterweight	Brass or Stainless Steel
6. Float	PVC or Stainless Steel
7. Bracket	Mild Steel with Polyester Coating

LEVEL INDICATOR MECHANICAL FLOAT TYPE

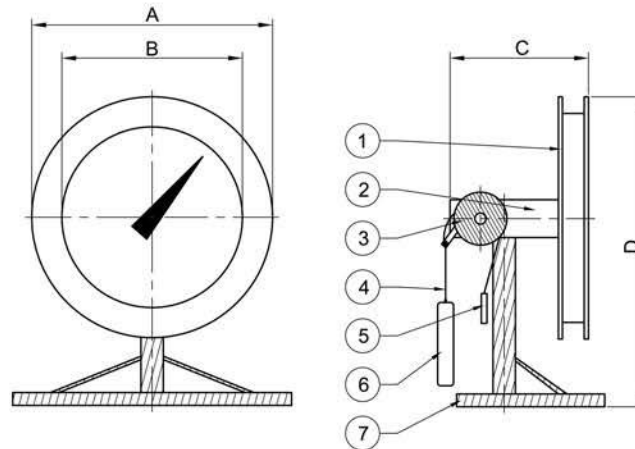
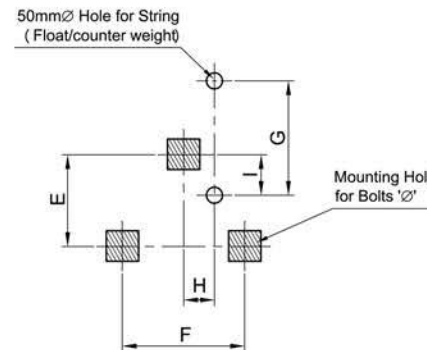


FIG 7L1



DIMENSIONS (mm)

Dial Size(mm)	A	B	C	D	E	F	G	H	I	Ø
300	400	300	230	470	152	203	190	51	25	3/8"
400	500	400	230	622	178	254	190	51	25	3/8"
600	700	600	230	857	229	457	190	51	25	5/16"
900	1000	900	230	1168	254	686	190	51	25	1/2"

*The specifications are subject to change without further notice