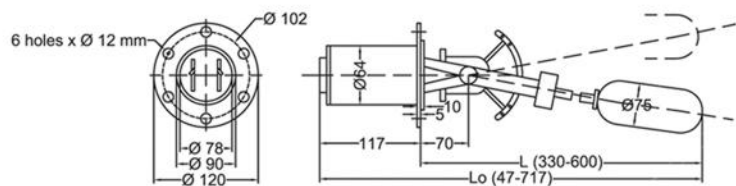


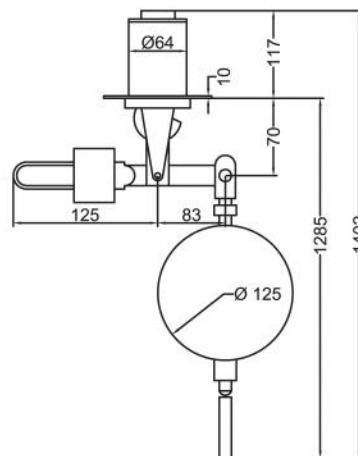


MAGNETIC FLOAT SWITCH VERTICAL / HORIZONTAL

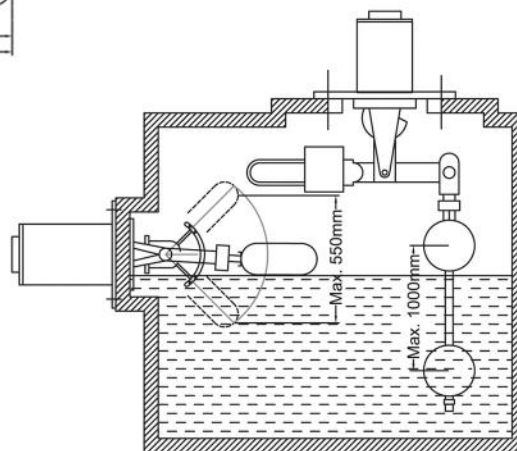
Aluminium
Stainless Steel
10 Bar
Up to 150°C
Round Flange
Micro switch
1 x SPDT Contact
220VAC/5A, 24VDC/0.5A
Minimum 0.85
Weather Proof IP65



MAG-HF (Horizontal Mounting)



MAG-VF (Vertical Mounting)



DIMENSIONS (mm)

Size (inch)	MAG-HF	MAG-VF
Mounting	Horizontal	Vertical
Adjustment Range	25 - 550	10 - 1000
Float Diameter	75	126
Flange O.D.	120	120
Flange P.C.D.	102	102
Flange Bolt Hole	6 Holes x Ø12	6 Holes x Ø12

*The specifications are subject to change without further notice